

HIWIN®

**MULTI AXIS
ROBOT**

INDUSTRIE 4.0 Best Partner



Articulated Robot

RA 605

RT 605



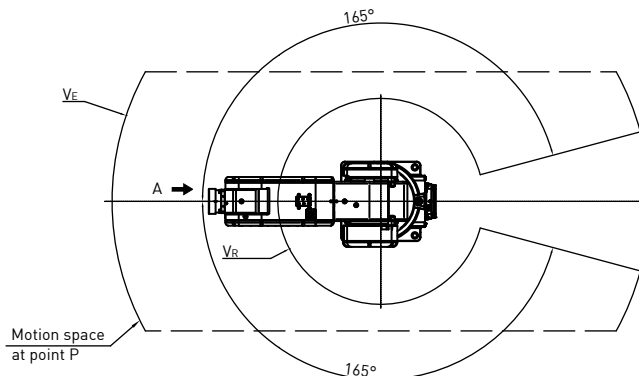
RT605

RA605

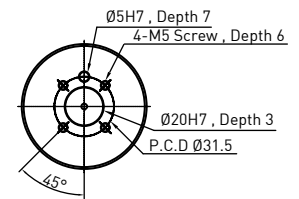
Dimensions

Model / Dimensions	V _A	V _B	V _C	V _D	V _E	V _F	V _G	V _H	V _I	V _J	V _K	V _L	V _M	V _N	V _O	V _P	V _Q	V _R	V _S
RA605-710-GB RT605-710-GB	710	649	281	434	309	269	R340	160	1055	R680	211	R429.3	101.7°	67	138.3°	R242	338	R272	812
RT605-909-GB	909.8	848.1	363.3	451.7	408.3	368.5	R439.8	317.2	1254.8	R879.8	292.9	R564.3	100.2°	24.7	139.8°	R302.5	438	R332.5	911.75

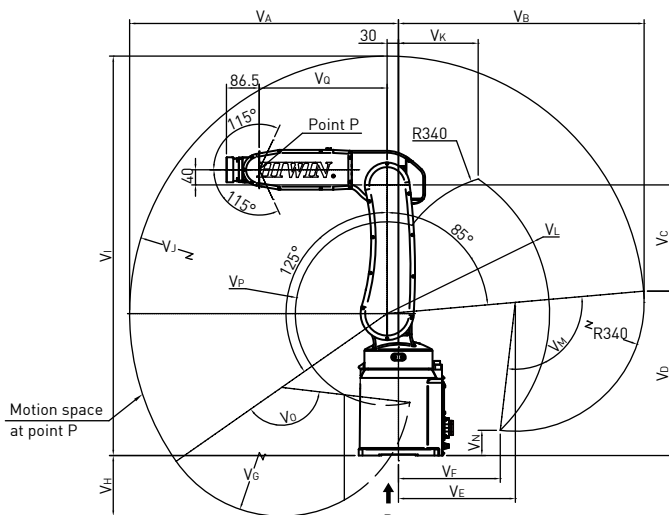
Unit:mm



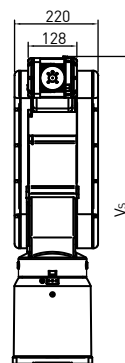
Top View



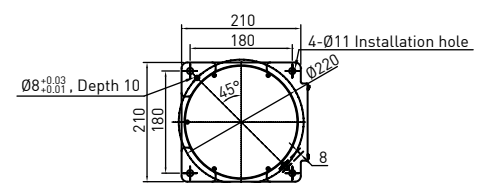
VIEW A
Mechanical Interface Detail



Side View



Front View



VIEW B
Installation Dimension Detail

특징

- 높은 자유도와 유연성의 특징을 활용하여 관절 로봇 암은 3D 산업(더럽고, 어렵고, 위험한)에서 매우 복잡한 작업을 수행합니다.

응용

- Loading/unloading, packaging, aligning, assembly, deburring, polishing, dispensing, stacking and inspection.

Model	RA605-GB	RT605-GB	
자유도	6		
하중 [kg]	5		
최대회전반경 [mm]	710	710	909
동작범위 [°]	J1	±165	
	J2	+85 ~ -125	
	J3	+185 ~ -55	
	J4	±190	
	J5	±115	
	J6	±360	
반복정밀도 [mm]	±0.02	±0.03	±0.04
사이클타임 [s]*Note 1	0.5		
중량 [kg]	40	40	45
보호 등급	IP65	IP32	
컨트롤러 규격	RCA605-GB	RCT605-GB	

* Note 1: 수직거리25mm, 수평거리300mm왕복 운동에 기반합니다.

Articulated Robot

RA 610

RT 610



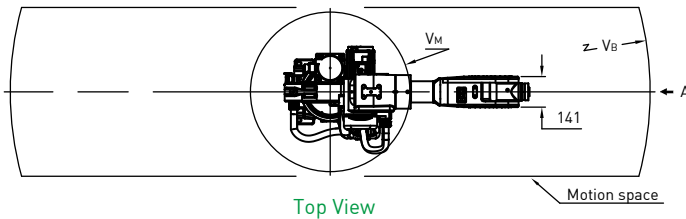
RT610-1476-GB

RA610-1476-GB

Dimensions

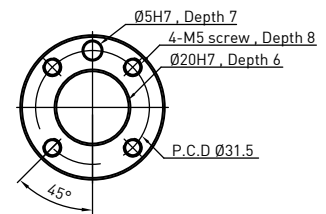
Model / Dimensions	V _A	V _B	V _C	V _D	V _E	V _F	V _G	V _H	V _I	V _J	V _K	V _L	V _M
RA610-1355-GB RT610-1355-GB	1075	1355	1663	680	R575	182	552	R1215	R232.5	R688	159°	111.2°	R372.5
RA610-1476-GB RT610-1476-GB	1196	1476	1785	802	R697	304	678	R1336	R228	R904	161°	95°	R368
RA610-1672-GB RT610-1672-GB	1392	1672	1981	998	R892	500	878	R1532	R323	R951	164.7°	105.3°	R463
RA610-1869-GB RT610-1869-GB	1589	1869	2178	1196	R1089	697	1078	R1729	R490	R1129	166.6°	103.4°	R630

Unit:mm

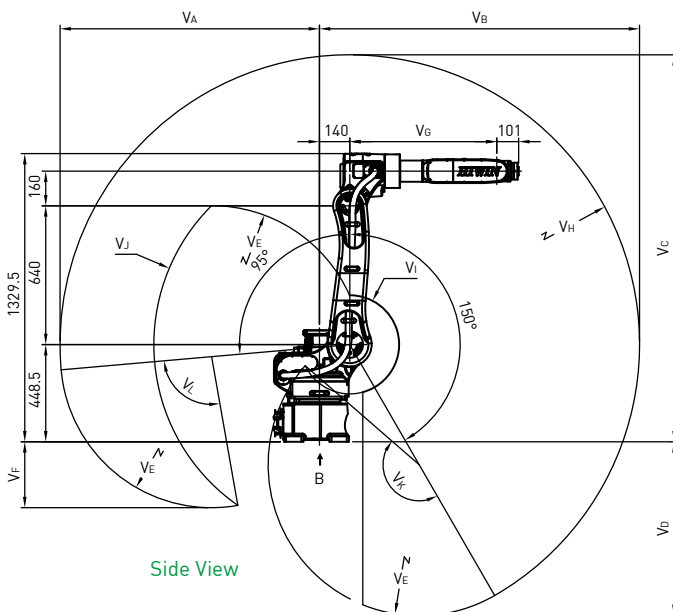


Top View

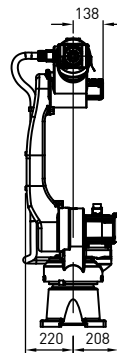
Motion space



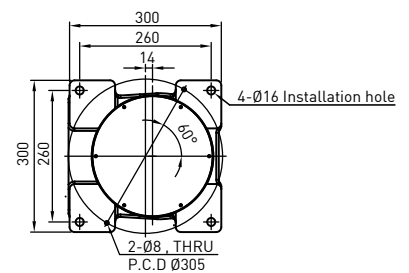
VIEW A
Mechanical Interface Detail



Side View



Front View



VIEW B
Installation Dimension Detail

특징

- RA610 은 높은 자유도, 높은 부하용량, 다양한 작동 범위를 가지고 있으며 다양한 자동화 라인, 다양한 End Effector를 결합하여 사용 할 수 있다.

응용

- Loading/unloading, palletizing, assembly, polishing, dispensing, packaging, aligning and inspection.

Model	RA610-GB				RT610-GB			
자유도	6							
하중 [kg]	12	10	10	7	12	10	10	7
최대회전반경 [mm]	1355	1476	1672	1869	1355	1476	1672	1869
동작범위 [°]	J1	±170						
	J2	+95 ~ -150						
	J3	+185 ~ -85						
	J4	±190						
	J5	±135						
	J6	±360						
반복정밀도 [mm]	±0.05	±0.06	±0.05	±0.06	±0.05	±0.06	±0.05	±0.06
사이클타임 [s]*Note 1	1							
중량 [kg]	143	147	150	152	143	147	150	152
보호 등급	IP54(Wrist:IP65)				IP32			
컨트롤러 규격	RCA610-GB				RCT610-GB			

* Note 1: 수직거리25mm, 수평거리300mm왕복 운동에 기반합니다.

Articulated Robot

RA 620



RA620-1739

특징

- RA620 은 높은 자유도, 높은 부하용량, 다양한 작동 범위를 가지고 있으며 다양한 End Effector를 통합하여 다양한 자동화 라인에 적용할 수 있다.

응용

- Loading/unloading, palletizing, assembly and polishing.

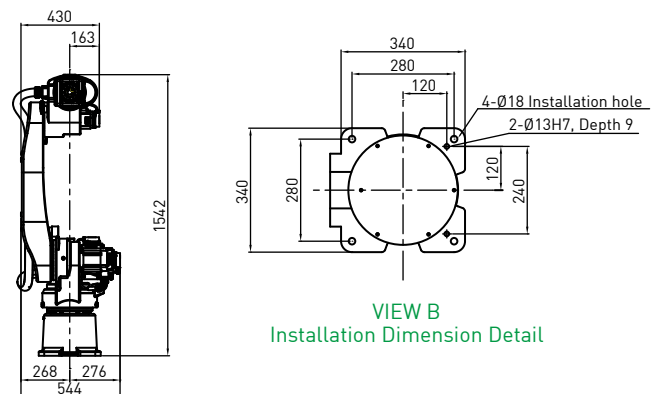
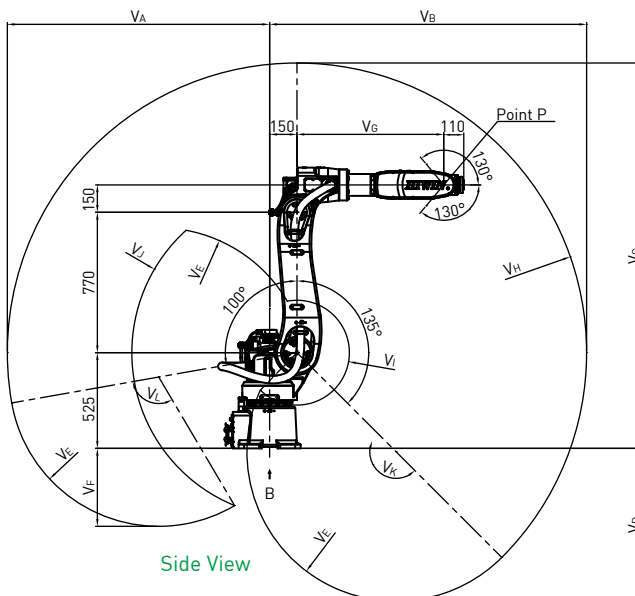
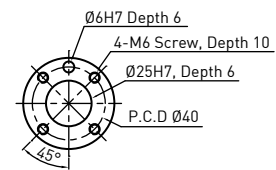
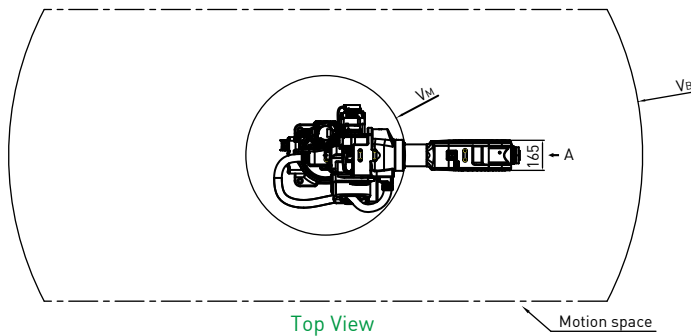
자유도	6	
하중 [kg]	30	20
최대회전반경 [mm]	1621	1739
동작범위 [°]	J1	± 180
	J2	+100 ~ -135
	J3	+190 ~ -80
	J4	± 200
	J5	± 130
	J6	± 360
반복정밀도 [mm]	± 0.06	
사이클타임 [s]*Note 1	0.9	
중량 [kg]	226	230
보호 등급	IP54(Wrist:IP65)	
컨트롤러 규격	RCA620	

* Note 1: 수직거리25mm, 수평거리300mm왕복 운동에 기반합니다.

Dimensions

Model / Dimensions	V _A	V _B	V _C	V _D	V _E	V _F	V _G	V _H	V _I	V _J	V _K	V _L	V _M
RA620-1621	1321	1621	1996	721	R701	310	685	R1471	R293	R821	158°	112°	R443
RA620-1739	1439	1739	2114	838	R819	428	805	R1589	R288	R906	159°	111°	R438

Unit:mm



SCARA Robot RS Series



RS406

RS403

특징

- SCARA 로봇은 자체 개발한 핵심 부품을 채택하여 높은 정밀도와 유연성을 가지고 있다. 다양한 End Effector와 결합하여 고정도 조립 작업이나 고속 평면 가공을 달성할 수 있다.

응용

- Loading/unloading, packaging, arranging, assembly, dispensing, stacking and inspection.

Model	RS403	RS406
자유도	4	
하중 [kg]	1/3	2/6
최대화전반경 [mm]	400	600
동작범위	J1[°]	±128
	J2[°]	±130
	J3[°]	±360
	J4[mm]	150
반복정밀도	J1-J2[mm]	±0.01
	J3[°]	±0.01
	J4[mm]	±0.01
사이클 타임 [s]*Note 2	0.42	0.45
중량 [kg]	16	22
보호 등급	IP20	
컨트롤러 규격	HRC-S410	

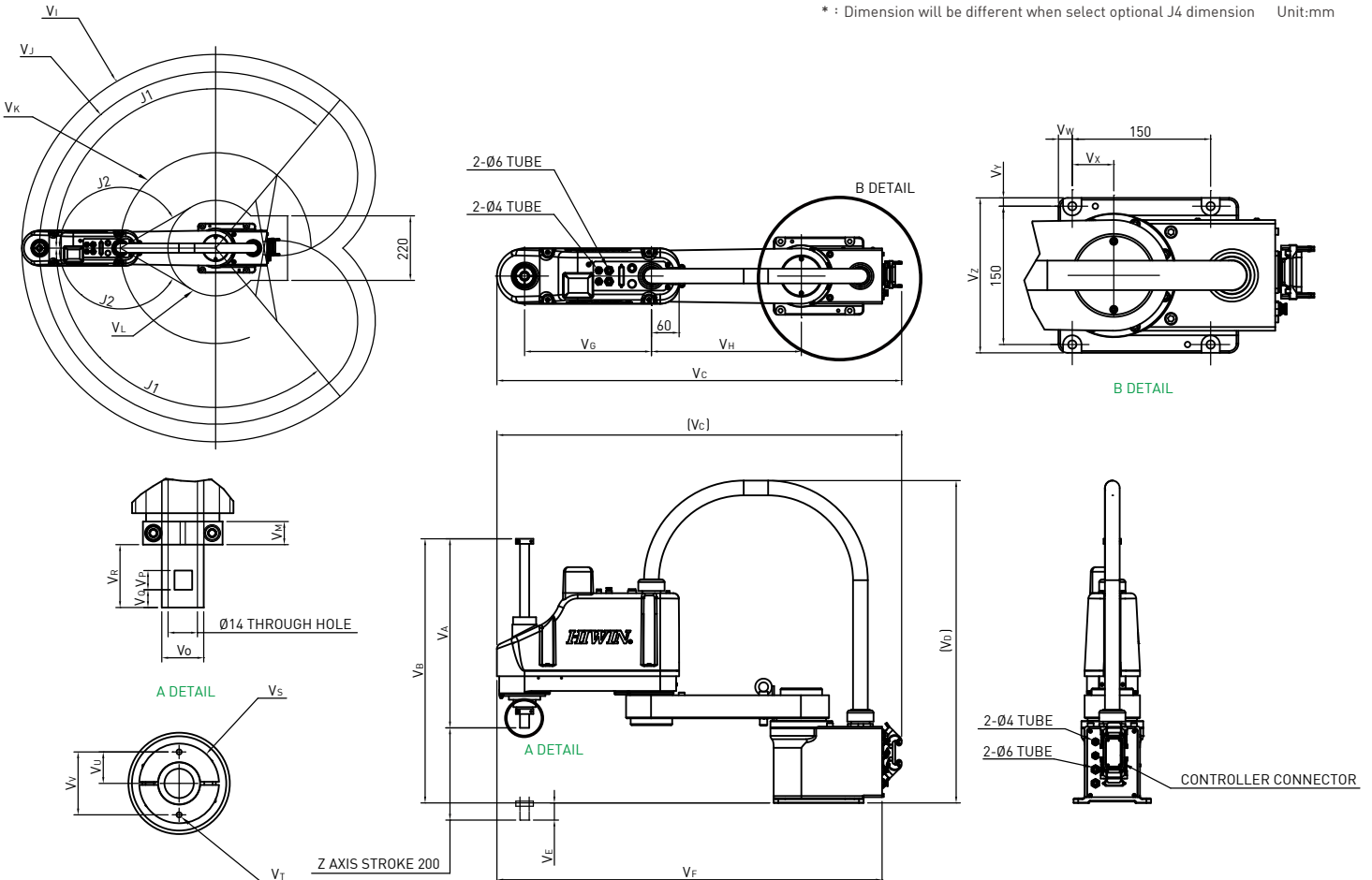
* Note 1: 옵션 J4축 300mm and 400mm 적용 가능합니다.

Note 2: 수직거리 25mm, 수평거리 300mm 왕복 운동에 기반합니다.

Dimensions

Model / Dimensions	V _A *	V _B *	V _C	V _D	V _E *	V _F	V _G	V _H	V _I	V _J	V _K	V _L	V _M	V _N	V _O	V _P	V _Q	V _R	V _S	V _T	V _U	V _V	V _W	V _X	V _Y	V _Z
RS403	330	494	649.1	677.3	-15.2	606	175	225	R457	R400	R225	R176.5	10	Ø11	Ø16	10	10	30	R17.5	2-M4X0.7P	12	24	45	30	11	172
RS406	410	572.8	878.4	720.8	37.2	835	275	325	R660	R600	R325	R162.6	11	Ø14	Ø20	-	-	30	R19	2-M3X0.5P	15	30	15	45	9	168

* : Dimension will be different when select optional J4 dimension Unit:mm



Controller Series

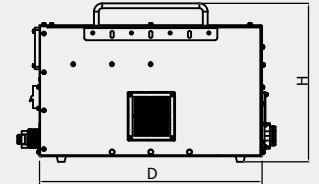
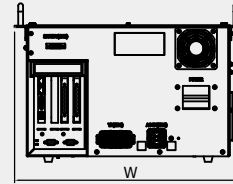
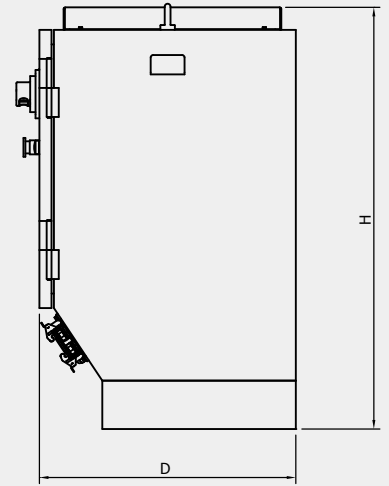
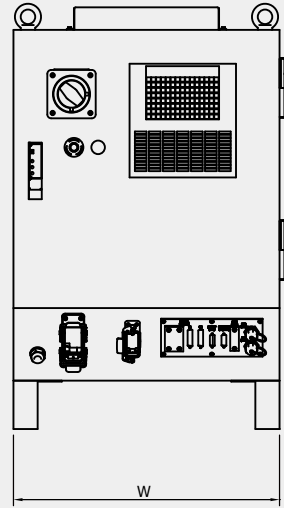


RCA620



RCA605-GB

Dimension



Specifications

Model	RCA605-GB, RCT605-GB	RCA610-GB, RCT610-GB	RCA620	RCD403-GB	HRC-S410	
제어 축 수	6	6	6	4	4	
중량 [kg]	34	43	80	34	35	
전원	입력 전압 / 주파수	1Ø200~240V 50/60Hz	1Ø200~240V 50/60Hz	3Ø200~240V *Note 1 50/60Hz	3Ø200~240V *Note 2 50/60Hz	1Ø220~240V 50/60Hz
	전류[A]	8A	18A	22A	4.5A	10A
◆ 입. 출력 *Note 3	Function I/O	8in/8out	8in/8out	8in/8out	8in/8out	11in/11out
	Digital I/O	24in/24out	24in/24out	16in/16out	24in/24out	-
◆ Communication Interface	RS232	✓	✓	-	✓	-
	Ethernet	✓	✓	✓	✓	✓
	Modbus	-	-	-	-	✓
	USB	✓	✓	✓	✓	✓
★ Encoder Capture	-	-	-	◆ 4ch	-	
환경 온도 [°C]	0~45	0~45	0~40	0~45	0~40	
환경 습도 [%]	20~75 (결로없음)	20~75 (결로없음)	45~85 (결로없음)	20~75 (결로없음)	20~80 (결로없음)	
보호 등급	IP20	IP20	IP54	IP20	IP20	
Dimensions [D x W x H]*Note 4	460 x 420 x 271	554 x 420 x 271	530 x 550 x 872	460 x 420 x 271	459 x 460 x 284	

◆ Standard

★ Optional

Unit:mm

* Note 1: 공급 전원이3-phase 380V일 경우, 추가적인 변압기를 사용해야 합니다. (3-phase 380V to 220V, 5KVA)

Note 2: 공급 전원이3-phase 380V일 경우, 추가적인 변압기를 사용해야 합니다. (3-phase 380V to 220V, 2KVA)

Note 3: 확장 가능, RCD403-GB확장 불가.

Note 4: 케이블 설치에 필요한 치수는 도면에 포함되어 있지 않습니다.

Subsidiaries / Research Center

HIWIN GmbH
OFFENBURG, GERMANY
www.hiwin.de
www.hiwin.eu
info@hiwin.de

HIWIN JAPAN
KOBE · TOKYO · NAGOYA · NAGANO ·
TOHOKU · SHIZUOKA · HOKURIKU ·
HIROSHIMA · FUKUOKA · KUMAMOTO,
JAPAN
www.hiwin.co.jp
info@hiwin.co.jp

HIWIN USA
CHICAGO · SILICON VALLEY, U.S.A.
www.hiwin.com
info@hiwin.com

HIWIN Srl
BRUGHERIO, ITALY
www.hiwin.it
info@hiwin.it

HIWIN Schweiz GmbH
JONA, SWITZERLAND
www.hiwin.ch
info@hiwin.ch

HIWIN s.r.o.
BRNO, CZECH REPUBLIC
www.hiwin.cz
info@hiwin.cz

HIWIN SINGAPORE
SINGAPORE
www.hiwin.sg
info@hiwin.sg

HIWIN KOREA
SUWON · MASAN, KOREA
www.hiwin.kr
info@hiwin.kr

HIWIN CHINA
SUZHOU, CHINA
www.hiwin.cn
info@hiwin.cn

Mega-Fabs Motion
Systems, Ltd.
HAIFA, ISRAEL
www.mega-fabs.com
info@mega-fabs.com

HIWIN®

HIWIN TECHNOLOGIES CORP.

No. 7, Jingke Road,
Taichung Precision Machinery Park,
Taichung 40852, Taiwan
Tel: +886-4-23594510
Fax: +886-4-23594420
www.hiwin.tw
business@hiwin.tw

-
- HIWIN is the registered trademark of Hiwin Technologies Corp.. Please avoid buying the counterfeit goods that are from unknown sources to protect your rights.
 - Actual products may be different from the specifications and photos in this catalog, and the differences in appearances or specifications may be caused by, among other things, product improvements.
 - Hiwin will not sell or export those techniques and products restricted under the "Foreign Trade Act" and relevant regulations. Any export of restricted products should be approved by competent authorities in accordance with relevant laws, and shall not be used to manufacture or develop the nuclear, biochemical, missile and other military weapons.
 - HIWIN website for patented product directory: http://www.hiwin.tw/Products/Products_patents.aspx

The specifications in this catalog are subject to change without notification.

Copyright © HIWIN Technologies Corp.

©2018 FORM C99DK01-1808 (PRINTED IN TAIWAN)